



Cornet Creek Monsoonal Flooding

Cornet Creek drainage has loose debris and unstable materials that can be quickly redeposited within the alluvial fan that covers much of Telluride. Prolonged wet weather and localized heavy rainfall trigger debris flow and flooding events.

The last flood event

occurred in

2007, and

the two most

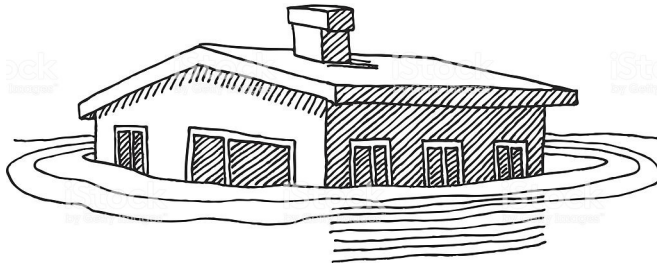
significant

debris flow

events

occurred in

1914 and 1969. A large debris flow in Cornet is possible during any given year.



Are you aware and prepared?

- ⇒ Keep an eye on the creek and how it is flowing.
- ⇒ If there is an event, shelter in place on a second floor if possible.
- ⇒ Sign up for CodeRED emergency notifications at www.sanmiguelcountycogov/174/Emergency-Management.